



PREVENTION
Learning Portal

LOCATING COMMUNITY-LEVEL DATA IN PENNSYLVANIA



The Prevention Learning Portal's, ***Locating Community-Level Data in Pennsylvania***, resource provides you with data sources that you can access across the Commonwealth, the behavior challenges that are represented within those data sources, plus why the behavior challenges occur. While this resource outlines critical information on what's available, the PLP also offers a free eCourse on these topics and takes you on a deeper dive to unfold the behavior challenges experienced in communities.

This valuable tool is designed to empower community leaders, educators, and policymakers with the knowledge and skills needed to identify and address local issues effectively. By leveraging accurate data, stakeholders can develop targeted interventions and strategies that promote healthier, more resilient communities. The course also encourages collaboration among various sectors, fostering a holistic approach to problem-solving that takes into account the unique needs and strengths of each community. Whether you are new to community data analysis or looking to expand your current understanding, this resource offers a comprehensive guide to making informed, impactful decisions.

[Click here to Enroll in the free
eLearning Course](#)



WHAT ARE THE POSSIBLE REASONS AS TO WHY BEHAVIOR CHALLENGES ARE OCCURRING?

COMMUNITY RISK FACTORS

Low Neighborhood Attachment, Perceived Availability of Drugs, Perceived Availability of Handguns, Laws & Norms Favorable to Drug Use.

FAMILY RISK FACTORS

Family History of Antisocial Behavior, Poor Family Management, Parental Attitudes Favorable to Drug Use, Parental Attitudes Favorable to Antisocial Behavior, Family Conflict.

SCHOOL RISK FACTORS

Academic Failure, Low Commitment to School

PEER/INDIVIDUAL RISK FACTORS

Rebelliousness, Gang Involvement, Perceived Risk of Drug Use, Attitudes Favorable to ASB, Sensation Seeking, Rewards for ASB, Friend's Use of Drugs, Interaction with Antisocial Peers, Depressive Symptoms.

PROTECTIVE FACTORS

Community Rewards for Prosocial Involvement, Family Attachment, Family Opportunities for Prosocial Involvement, Family Rewards for Prosocial Involvement, School Opportunities for Prosocial Involvement, School Rewards for Prosocial Involvement, Belief In The Moral Order, Religiosity.

SYSTEMIC FACTORS

Perception of Risk, Perception of Parental Disapproval, Perception of Peer Disapproval, Attitudes Toward Peer Use, Community Risk Associated with Availability, Rules and Antisocial Behavior, Favorable Attitudes Toward Drug Use.



PAYS

The Pennsylvania Youth Survey, or PAYS, is conducted anonymously every two years for school students in the 6th, 8th, 10th and 12th grades to learn about their behavior, attitudes and knowledge concerning alcohol, tobacco, other drugs and violence.

The data gathered in PAYS serve three primary needs:

1. Collecting Information about the pattern and changes of the use and abuse of harmful substances and behaviors. This information is for school administrators, state agency directors, legislators and others.
2. Assess Risk Factors and Protective Factors that are related to these behaviors and the protective factors that help guard against them.
3. Data from the PAYS helps PA policy makers understand the needs of youth and families statewide and helps target funding where it will make the most difference. This is offered to school districts at no cost and administered anonymously. This information allows community leaders to direct prevention resources to areas where they are likely to have the greatest impact!

BEHAVIOR CHALLENGES UNCOVERED IN THIS DATA SOURCE



D & A CONSUMPTION

Early Initiation, Prescription & OTC Medications, Other Drugs, Access & Willingness to Use



D & A CONSEQUENCES

Risky Substance Use-Related Behaviors, Drugs on School Property



FAMILY/SOCIOECONOMIC



JUVENILE DELINQUENCY

Gambling, Other Antisocial Behavior



EDUCATION

Commitment to School, Involvement in pro-social activities, Violence/Drugs on School Property, Bullying & Internet Safety



MENTAL HEALTH

Mental Health Concerns & Suicide Risk, Depression & Substance Use, Bullying & Depression/Suicide, Transitions & Mobility, sleep, grief and other stressful events

[PAYS WEBSITE](#)



DDAP DATA DASHBOARD

The Department of Drug and Alcohol Programs maintains and collaborates on a number of data dashboards. These dashboards serve as a tool for accessing multiple sources of data in one place and displaying that data in ways that promote more efficient data-driven decision making and strategic planning. Most importantly, this data aims to help prevent as many Pennsylvanians as possible from battling addiction and to help those that are suffering from the disease of addiction.

BEHAVIOR CHALLENGES UNCOVERED IN THIS DATA SOURCE



D & A CONSUMPTION

PAYS consumption data as listed above,
BRFSS Adult Alcohol & Tobacco Use, PLCB
Sales Per Capita



D & A CONSEQUENCES

Drug Arrests, ATOD Related Causes of Death,
D&A Related Crashes, Delinquency
Dispositions, Rx Related Calls to Poison Control



FAMILY/SOCIOECONOMIC



JUVENILE DELINQUENCY



EDUCATION



MENTAL HEALTH

DDAP WEBSITE



BRFSS

The Behavioral Risk Factor Surveillance System (BRFSS) is the nation’s premier system of health-related telephone surveys that collect state-level data about U.S. residents regarding their health-related risk behaviors, chronic health conditions, and use of preventive services. Established in 1984 with 15 states, BRFSS now collects data in all 50 states as well as the District of Columbia and three U.S. territories. BRFSS completes more than 400,000 adult interviews each year, making it the largest continuously conducted health survey system in the world.

BEHAVIOR CHALLENGES UNCOVERED IN THIS DATA SOURCE



D & A CONSUMPTION

Alcohol Consumption, E-cigarettes, Opioid Use, Tobacco Use (Adult)



D & A CONSEQUENCES



FAMILY/SOCIOECONOMIC

Adverse Childhood Experiences



JUVENILE DELINQUENCY

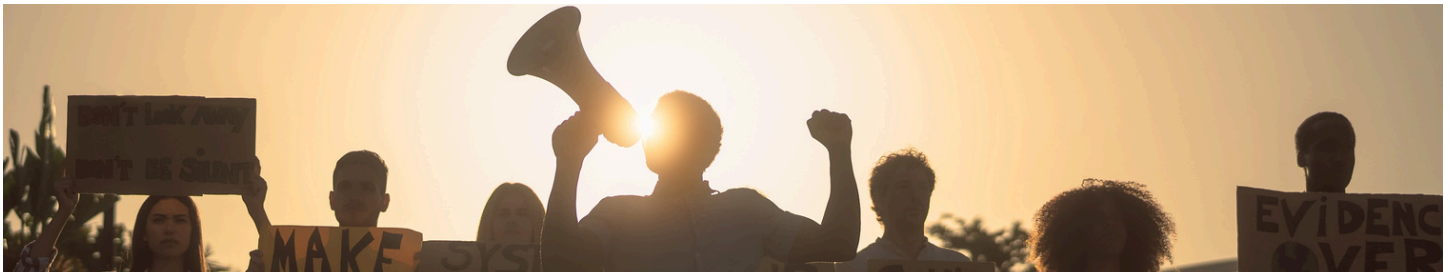


EDUCATION



MENTAL HEALTH

BRFSS WEBSITE



County Health
Rankings & Roadmaps

County Health Rankings & Roadmaps

CHR&R is a program of the University of Wisconsin Population Health Institute that draws attention to why there are differences in health within and across communities. The program highlights policies and practices that can help everyone be as healthy as possible. CHR&R aims to grow a shared understanding of health, equity and the power of communities to improve health for all. This work is rooted in a long-term vision where all people and places have what they need to thrive.

CHR&R is committed to creating resources and tools that support community-led efforts to accurately diagnose core problems, understand and account for historical context and implement evidence-informed solutions. CHR&R provides a snapshot of the health of nearly every county in the nation.

A wide range of factors influence how long and how well we live, including: opportunities for education, income and wealth, safe housing and the right to shape policies and practices that impact our lives and futures.

Power imbalances limit opportunities for some communities. How well we keep everyone healthy depends on how well we include everyone in setting priorities, making decisions, sharing resources and determining what is acceptable.

We can build the will to implement policies and programs that positively influence an equitable distribution of resources.

BEHAVIOR CHALLENGES UNCOVERED IN THIS DATA SOURCE



D & A CONSUMPTION



D & A CONSEQUENCES



FAMILY/SOCIOECONOMIC

Teen Births, Food Insecurity, Uninsured, Unemployment, Income Inequality, Single-Parent Households, Median Household Income



JUVENILE DELINQUENCY

Juvenile Arrests



EDUCATION

High School Completion, Some College, High School Graduation, Disconnected Youth, School Segregation, School Funding Adequacy, Free/Reduced Lunch, Reading/Math Scores



MENTAL HEALTH

Poor Mental Health Days, Frequent Mental Distress, Mental Health Providers, Suicides

[COUNTRY HEALTH WEBSITE](#)

We can also influence how groups are valued so that we can all thrive. CHR&R seeks to foster social solidarity and help build community power for health and equity.

The program advocates for a new understanding of data and evidence, and develops methods that can challenge assumptions, explore possibilities and build community power for health and equity.



JCJC Disposition Report

The Juvenile Court Judges' Commission was established by the Pennsylvania Legislature in 1959. Members of the commission are nominated by the Chief Justice of the Pennsylvania Supreme Court and appointed by the governor for three-year terms.

The Juvenile Court Judges' Commission is responsible for:

- Advising juvenile courts concerning the proper care and maintenance of delinquent and dependent children;
- Establishing standards governing the administrative practices and judicial procedures used in juvenile courts;
- Establishing personnel practices and employment standards used in probation offices;
- Collecting, compiling, and publishing juvenile court statistics; and
- Administering a grant-in-aid program to improve county juvenile probation.

BEHAVIOR CHALLENGES UNCOVERED IN THIS DATA SOURCE



D & A CONSUMPTION



D & A CONSEQUENCES



FAMILY/SOCIOECONOMIC



JUVENILE DELINQUENCY

Arrest Rates for Violent Crime, Secure Detention, Delinquency Dispositions, Delinquency Placement, Risk Reduction/Recidivism Outcomes



EDUCATION



MENTAL HEALTH

JCJC WEBSITE



PDE Safe Schools

The Pennsylvania Department of Education compiles and analyzes a wide variety of data about attendance, graduation rates, schools and school districts, student progress, transportation, and other information.

**BEHAVIOR CHALLENGES UNCOVERED
IN THIS DATA SOURCE**

☐

D & A CONSUMPTION

☐

D & A CONSEQUENCES☐☐

☒

EDUCATION
High School Graduation, Dropout Rates☐

PDE WEBSITE



**KIDS COUNT
DATA CENTER**

Kids Count

The Annie E. Casey Foundation funds a nationwide network of state-level KIDS COUNT® (LA INFANCIA CUENTA™) grantees to track the well-being of children in the United States. By providing high-quality data and trend analysis through its KIDS COUNT Data Center, the Foundation seeks to enrich local, state and national discussions concerning ways to secure better futures for all children — and to raise the visibility of children's issues through a nonpartisan, evidence-based lens. In addition to including data from the most trusted national resources, the KIDS COUNT Data Center draws from more than 50 KIDS COUNT state organizations that provide state and local data, as well publications providing insights into trends affecting child and family well-being. Through KIDS COUNT, the Foundation develops and distributes reports on important well-being issues. Much of the data from these nationally recognized publications, including the KIDS COUNT Data Book, are featured on the KIDS COUNT Data Center.

BEHAVIOR CHALLENGES UNCOVERED IN THIS DATA SOURCE



D & A CONSUMPTION



D & A CONSEQUENCES



FAMILY/SOCIOECONOMIC

Employment & Income, Public Assistance, Housing, Poverty, Family & Community Indicators, Health Indicators, Safety & Risky Behavior Indicators, Juvenile Justice, Out of Home Placement



JUVENILE DELINQUENCY

Juvenile Justice, Out of Home Placement



EDUCATION

Education Indicators



MENTAL HEALTH

KIDS COUNT WEBSITE



PA Department of Human Services (DHS)

Our mission is to assist Pennsylvanians in leading safe, healthy, and productive lives through equitable, trauma-informed, and outcome-focused services while being an accountable steward of commonwealth resources.

Children are a big part of DHS and the department's Office of Children Youth and Families (OCYF) serves children and families through a nationally recognized child support enforcement program, oversees adoption and foster care services, and works with counties on child abuse prevention and juvenile justice issues.

**BEHAVIOR CHALLENGES UNCOVERED
IN THIS DATA SOURCE**

☐

D & A CONSUMPTION

☐

D & A CONSEQUENCES

☒

FAMILY/SOCIOECONOMIC
Child Abuse, DHS Services Map

☐

JUVENILE DELINQUENCY

☐

EDUCATION

☐

MENTAL HEALTH

DHS WEBSITE



**United Way
of Pennsylvania**

United Way 2-1-1

The United Way’s mission is to assist Pennsylvanians in leading safe, healthy, and productive lives through equitable, trauma-informed, and outcome-focused services while being an accountable steward of commonwealth resources.

BEHAVIOR CHALLENGES UNCOVERED IN THIS DATA SOURCE



D & A CONSUMPTION



D & A CONSEQUENCES



FAMILY/SOCIOECONOMIC
Requests for Assistance



JUVENILE DELINQUENCY



EDUCATION



MENTAL HEALTH

UNITED WAY WEBSITE